

WaterTech

COMPANY
MANAGEMENT SYSTEM
CERTIFIED BY DNV GL
ISO 9001 - ISO 14001
ISO 45001



MID MI-001

Multi - jet water meter
with dry dial counter

BETA SOC

BETA SDC

Multi - jet water meter with dry dial counter

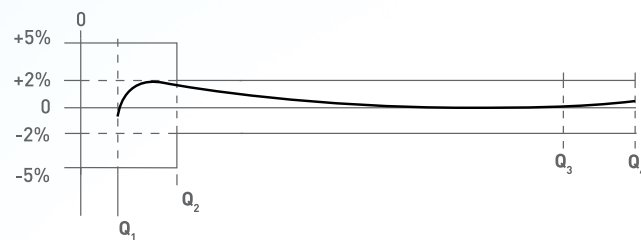
PERFORMANCE ACCORDING TO MID 2014/32/UE DIRECTIVE * AS AMENDED

SIZE		PERMANENT FLOW Q_3 (m ³ /h)	MAXIMUM FLOW Q_4 (m ³ /h)	TRANSITIONAL FLOW Q_2 (L/h)	MINIMUM FLOW Q_1 (L/h)	WORKING PRESSURE (bar)	MINIMUM READING (l)	MAXIMUM READING (m ³)	TEMPERATURE CLASS
(mm)	(inch)								
13/15	1/2"	2,5	3,125	50,0	31,3	16	0,05	99.999	T30/T50
20	3/4"	4,0	5,000	80,0	50,0	16	0,05	99.999	T30/T50
25	1"	6,3	7,875	126,0	78,8	16	0,05	99.999	T30/T50
30	1 1/4"	10,0	12,500	200,0	125,0	16	0,05	99.999	T30/T50
40	1 1/2"	16,0	20,000	320,0	200,0	16	0,5	999.999	T30/T50
50	2"	25,0	31,250	500,0	312,5	16	0,5	999.999	T30/T50

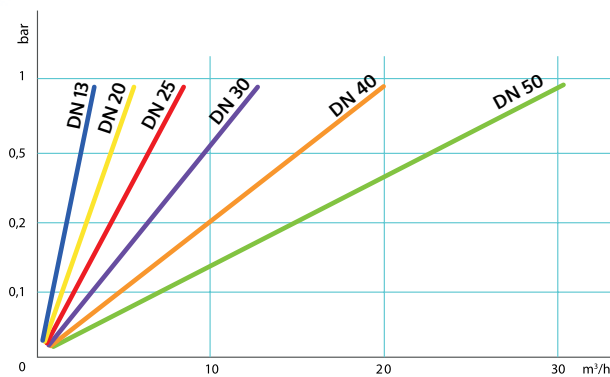
* It replaces the MID 2004/22/CE Directive.

Metrological class MID (Q_3/Q_1) R = 80

TYPICAL ERROR CURVE

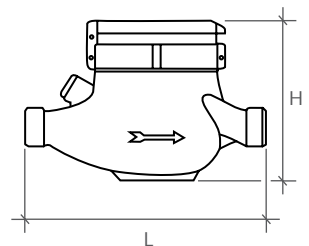


PRESSURE LOSS DIAGRAM

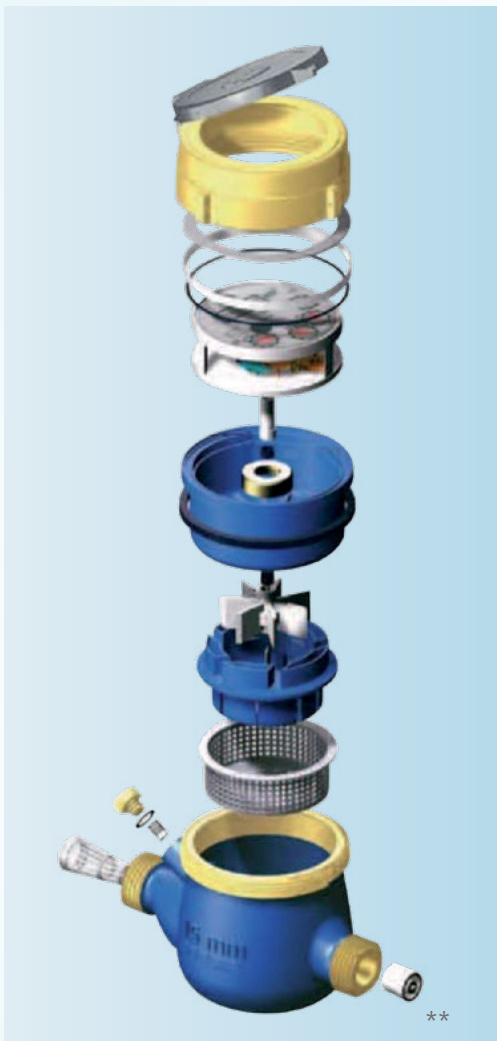


DIMENSIONS

(mm) SIZE (inch)	13/15	20	25	30	40	50 *
L (mm)	110 - 145 165 - 170	160 190	160 260	160 260	200 - 300	300
H (mm)	105	110	115	120	150	180 fil 190 fla
TOTAL LENGTH OF CONNECTORS (mm)	80	100	100	120	140	160



Rev. 5 The content of this data sheet is intended to give general information only, we reserve the right to make alterations without prior notification



**

** non return valve on request

* body in cast iron, available also in flanged version.

For additional information and options, do not hesitate to contact us

WATERTECH S.P.A. - Water meters

Factory, commercial main office and administration: Str. Antica Fornace, 2/4 • 14053 Canelli (AT) – Italy

Tel +39 0141 822106-832151 • Fax +39 0141 832198 • Mail info@wtmeters.it • Web www.wtmeters.it